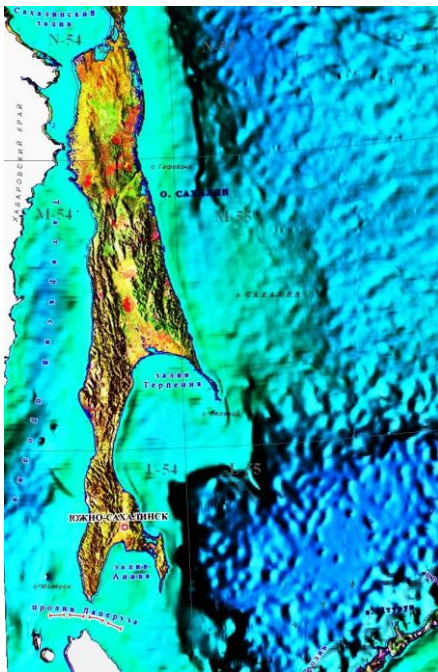


Project Profile

Sakhalin island, 2014



Target	High Resolution Electromagnetic survey for prospects ranking and exploration risk reduction
Country	Russia Federation
Regions	Far East, Japan sea
Areas	South License block
Client	Kirinskaya Oil Comp



GEOLOGICAL OBJECTIVES

1. Anticline traps, sandy reservoirs
2. Stratigraphic traps, clastic reservoirs

SCOPE OF SERVICES:

Acquisition

I- Induced Induced Polarization - **IIP**

II- Second Seismo Electrical Effect - **SSEF**

III- Induced Polarization - **IP**

Integrated interpretation of electromagnetic, seismic, geochemistry, well-logging data

FIELD TECHNIQUES

Dipole Receivers array – 1300 м for **Rk**

Symmetrical Source line- 400 м for **IP**

Record length – 9sec

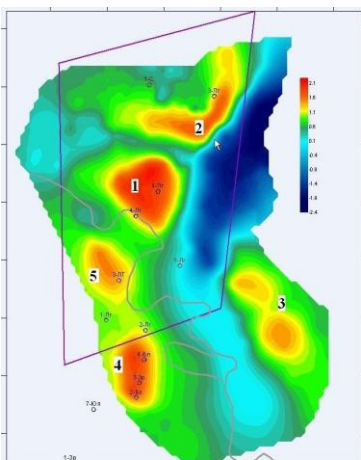
Fold - 40 (5x8)

RESULTS

License block was studied with HREM Technique

3D Integrated interpretation of HREM seismic, geochemistry, well-logging data was carried out

New targets for detailed study were detected Plays and prospects have been ranked by Exploration risk assessment



Под цифрами 4 и 5 показаны разрушенные месторождения газа Западно-Луговое и Благовещенское, которые четко обозначены в поле параметра вызванной поляризации.

Под цифрами 1, 2, 3 - аномалии параметра ИП. Объект под номером 1 - совпадает с поднятием, под номером 2 - с палеоруслом. Сахалин.

Рисунок 3.